



Investment Partner in Renaissance 2010

2009 New Ventures in Education Seminar:
Americans with Disabilities Act Compliance

April 27, 2009

Creating a New Market of Public Education

Bebe Novich
Director of ADA Policy
Office of the CEO
Chicago Public Schools
benovich@cps.k12.il.us

Ensuring that your building meets all necessary requirements is essential

- ▶ If you are going to occupy a non-CPS site, you are responsible for ensuring that your site is accessible to people with disabilities when you open; your school will not be approved if it is not accessible
- ▶ Choose sites that are already accessible to people with disabilities, or sites that you are sure you can make fully accessible before you open

It is important to ensure proper access for all students

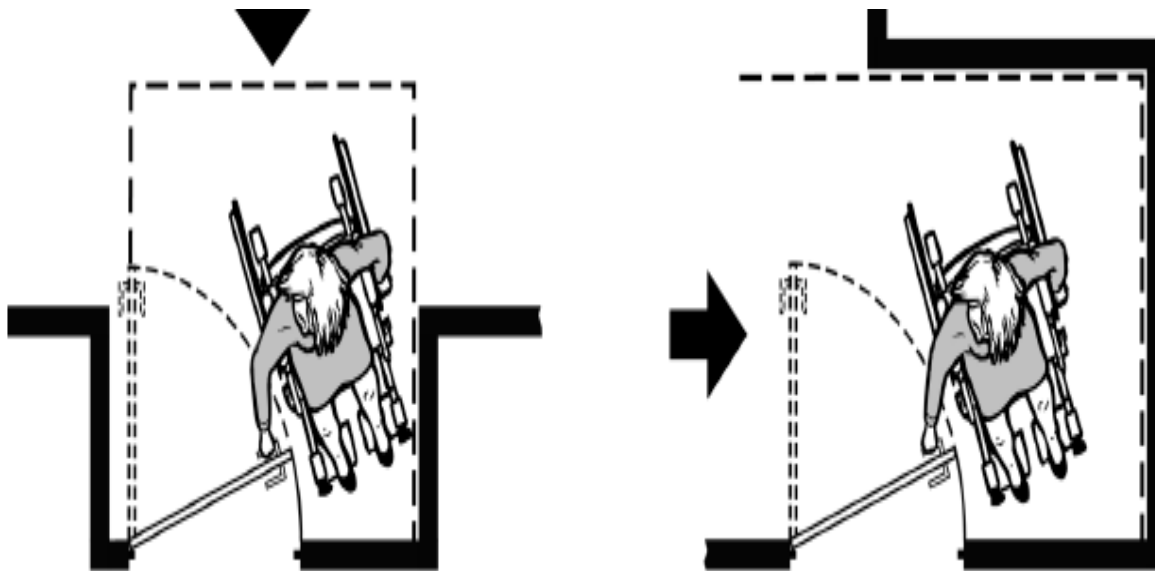
- ▶ The main entrance to the facility should be wheelchair accessible – either level or ramped



- ▶ Ensure that the building has an elevator that goes to all levels
- ▶ Make *absolutely certain* that there is a wheelchair accessible route to all unique function spaces – before you open
 - lunchroom, main office, gym, auditorium, locker room, library, labs

Appropriate washrooms and classroom doorways are also critical

- ▶ Wheelchair accessible washrooms (should have a 5x5 stall w/grab bars, among other things)
- ▶ Non-Recessed Classroom Doorways



A clear floor space on the latch side of the door (pull side) allows a person using a wheelchair or scooter to pull the door open and then enter. The size of the clear floor space varies depending on the direction of approach (shown by the arrows) and the door swing.



Visual fire alarms must be in place for persons who are deaf or hard of hearing

- ▶ **Visual fire alarms – strobe flashers** (alarms for people who are deaf or hard of hearing)



Resources/Tips

Resources:

- ▶ **Illinois Facilities Fund (IFF)**

- is a great resource for buildings accessibility assessment & planning

- ▶ **Me**

- *Please* use me to help you assess sites & understand requirements & likely costs

- ▶ **Ren2010 website:** lots of ADA information

- ▶ **Tip:** If you will need to make accessibility renovations, you will need to plan well in advance, have this all determined by the time of your final proposal

Contact Information

Bebe Novich

Director of ADA Policy

Office of the CEO

Chicago Public Schools

o:773-553-2158

c:312-730-8589

benovich@cps.k12.il.us